

**MADE
IN THE USA****Product Description:**

- Wheeled 5-Drawer Storage Cart with 3" Casters
- Organize crafts, tools, medical supplies, lab supplies and more with our versatile, locking 5-drawer cart
- Lightweight with easy and comfortable maneuvering
- Pullout supplementary work surface
- Industry-recognized 3" locking casters for quality and durability
- White Powder-Coated Aluminum Composite Material (ACM), High Density Polyethylene (HDPE), and White Powder-Coated Steel

Primary Area for Product Usage:

- Anywhere items need to be organized and mobile

Dispensing/Storage Areas:

- 3" Drawers (2):
 - Internal Dims: 16.00"W x 2.75"H x 15.50"D (40.6 cm x 7.0 cm x 39.4 cm)
 - Weight Capacity: 6.0 lbs each (2.7 kg)
- 6" Drawers (2):
 - Internal Dims: 16.00"W x 6.75"H x 15.50"D (40.6 cm x 17.1 cm x 39.4 cm)
 - Weight Capacity: 10.0 lbs each (4.5 kg)
- 9" Drawers (1):
 - Internal Dims: 16.00"W x 8.75"H x 15.50"D (40.6 cm x 22.2 cm x 39.4 cm)
 - Weight Capacity: 15.0 lbs each (6.8 kg)
- Sliding Work Surface:
 - Area: 12.00"W x .50"H x 11.75"D (30.5 cm x 1.3 cm x 47.6 cm)
 - Weight Capacity: 10.0 lbs (4.5 kg)

Product Specifications (overall external dimensions):

- 26.00"W x 35.00"H x 18.38"D (66.0 cm x 88.9 cm x 46.7 cm)
- 73.0 lbs (33.1 kg) - approximated

Package Specifications:

- Package Quantity: 1 per pallet
 - 30"L x 30"W x 41"H (76.2 cm x 76.2 cm x 104.1 cm)
 - 95.0 lbs (43.1 kg) - approximated +/- 10 lbs

Prop 65:

- Warning: This product contains chemicals known to the State of California to cause cancer and reproductive harm
- www.P65Warnings.ca.gov





1



Built-in positioning handle and exterior travel handle.

2



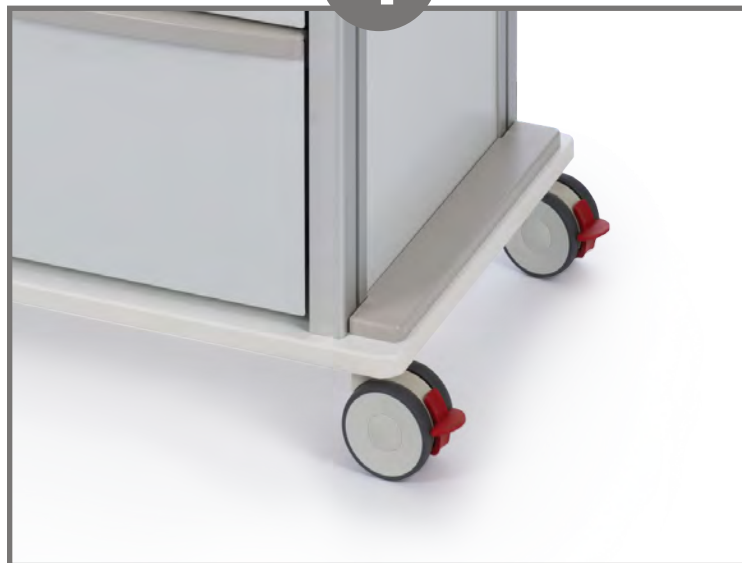
All drawers are locked and unlocked with one key. Varied sizes in drawers for most effective storage options.

3



Convenient pull-out supplementary surface to expand work area.

4



Two easy toe lock and unlock casters to immobilize cart for use.

**Chassis**

Powder-Coated ACM

Core/Work Surface

High Density Polyethylene

Handle

Powder-Coated Steel

Material Characteristics**Designed for Long-Term Use**

Aluminum Composite Material (ACM) consists of two, pre-painted, aluminum panels that are bonded to a solid polyethylene core. It is lighter and more durable than aluminum alone and is better than wood at resisting scratches and dents.

Our ACM resists corrosion, chipping, and flaking. It is lightweight, yet high in strength. This material will provide long-lasting products that hold up well, even in tough environments.

Powder-coated ACM is ideal for dispensers used in a healthcare or industrial settings. It is impact resistant and is not affected by extremes in temperature.

Powder-coated ACM is clean, bright, and attractive; it creates a professional appearance.

Designed for Heavy-Duty, Long-Term Use

High Density Polyethylene (HDPE) is a thermoplastic polymer made from petroleum. It is one of the most versatile plastics and is used in a wide variety of products.

Our HDPE has outstanding strength and a large strength-to-density ratio. It has a high-impact resistance and melting point providing high durability for products.

Designed for Long-Term, Heavy Duty Applications

Our steel components are coated with polyester powders which makes them highly resistant to corrosion.

Powder-coated steel is ideal for products used in a healthcare or an industrial setting because it is impact resistant and is not affected by extremes in temperature.

Components made of powder-coated steel are both attractive and functional, providing years of service.

Care and Cleaning

For best results, clean by washing the surface with a diluted solution of a mild, non-abrasive detergent in cold or warm water and a non-abrasive cloth.

Standard hospital cleaning supplies can be used. Dry with a soft cloth. Do not use any solvent-based materials, abrasives (e.g. Scotch-brite, steel wool), or apply excessive force during cleaning.

Resistant to stains, polycarbonate is easily cleaned with common cleaners or soap and water. Alcohol is recommended to remove grease or oil. Ammonia and acetone should not be used.