



**MOBILE STORAGE DESIGNED FOR EASIER  
RESTOCKING, INVENTORYING, AND CLEANING**

Insight® Mobile Supply Carts increase productivity with efficient organization, optimal storage space, and quick access to essential supplies. This helps organizations improve patient care and streamline operations.

**HYGIENIC**

- Cart has smooth and easy-to-clean surfaces
- Bins are machine-washable
- Bins and dividers are injection molded from ABS or polycarbonate plastic and therefore can be easily and safely cleaned

**DURABLE**

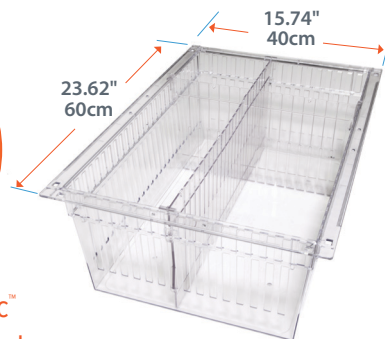
- Bins hold up to 77lb (35 kg)

**SPACE-SAVING**

- Optimum storage utilization for supplies of various sizes
- Stacking rim enables bins to be stacked, saving space when not in use

**SAFE**

- The safety-stop function prevents bins from accidentally falling out when pulled



ISO 60-40 Panelogic™  
interior cell panel system



- Bins**
- Available in 2", 4" and 8" (5, 10 and 20cm) heights
  - Can be optionally angled at 29°
  - Weight capacity 88.18lb (40kg)
  - Dividers can be added as needed
  - Nests into locking position when extended



- Metal Shelves**
- Powder-coated finish in white
  - Front-to-back dividers are repositionable
  - Rear lip keeps contents in place
  - Nests into locking position when extended



- Locking Drawer**
- Mounts to bottom of shelf
  - Laminate construction
  - Full-extension ball-bearing steel slides
  - Inset plastic pull
  - Lock can be keyed-alike to main cart



- Hanging Catheter Rack**
- Full-extension ball-bearing steel slides
  - Available in two lengths
  - Front ID face plate
  - Mounting: inside top of cabinet or bottom of shelf

# TRIPLE-WIDTH MOBILE SUPPLY CARTS FOR HEALTHCARE

## CART BASE

- Durable powder-coated steel
- 2 locking and 2 non-locking medical grade swivel casters with 5" (12.7cm) thermoplastic rubber wheels
- Protective bumper guard
- Casters raise cart base 6.4" (16.3cm) above floors and thresholds

## MAIN BODY

- Powder-coated steel outer case
- Highly versatile Panelogic™ cell panels allow inventory to be stored flat or at a 29° angle
- Powder-coated steel cart handles offset for space saving

## DOORS

- Tambour doors include a balanced spring roller shutter with interlocking slats and a built-in full width pull
- Glass doors include a powder-coated aluminum frame with 1/8" tempered glass, 4" (10.2cm) satin chrome bar pulls
- Key lock with an electronic locking option



## CLEANING

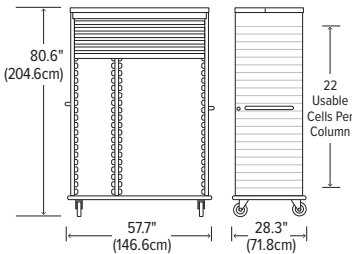
**Metal surfaces:** Wipe surfaces with soap and water or hospital-grade cleaner.

**Plastic bins and interior surfaces:** Bins are machine washable. All plastic surfaces can be cleaned using a soft cloth soaked in detergent and warm water, rinsed, and wiped dry. Avoid using solvents, rubbing alcohol, and abrasive cleaners on plastic surfaces as it will dull the finish.



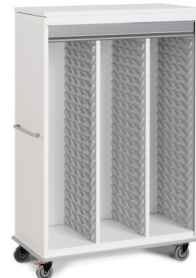
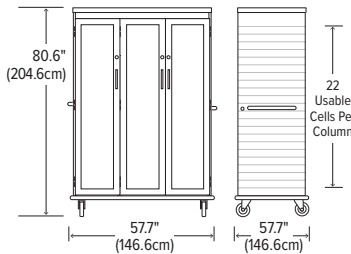
**ML138955** Tambour Door  
Cart Wt: 490lb  
Cart Dim: 57.7"W x 28.3"D x 80.6"H

1 Column, 1 Large Chamber  
Left - 15.7" x 23.6" (40 x 60cm)  
Right - 32.7" x 23.6" (83 x 60cm)



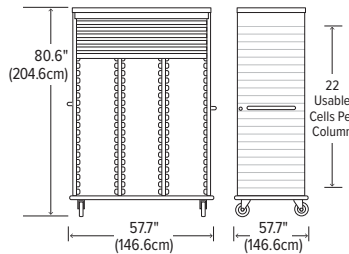
**ML138954** Glass Doors  
Cart Wt: 510lb  
Cart Dim: 57.7"W x 28.3"D x 80.6"H

1 Column, 1 Large Chamber  
Left - 15.7" x 23.6" (40 x 60cm)  
Right - 32.7" x 23.6" (83 x 60cm)



**ML138953** Tambour Door  
Cart Wt: 500lb  
Cart Dim: 57.7"W x 28.3"D x 80.6"H

3 Columns  
15.7" x 23.6" (40 x 60cm) Each



**ML138956** Glass Doors  
Cart Wt: 530lb  
Cart Dim: 57.7"W x 28.3"D x 80.6"H

3 Columns  
15.7" x 23.6" (40 x 60cm) Each

