



marketlab®

Insight® Undercounter Storage Carts

19689, 19689E

Low in Height Yet High on Storage

The Insight Undercounter Storage Cart is a space-saving solution designed for rooms that require organization without sacrificing room. Its streamlined profile allows it to blend seamlessly into compact areas while still offering plenty of storage for essential supplies. Built for adaptability, it supports additional accessories to meet the needs of various tasks. Thoughtfully designed for ease of movement, it can be repositioned effortlessly to keep supplies accessible wherever they're needed.



Features

- Fits underneath counters and benchtops
- Three full-extension drawers maximize storage capacity
- Stain-resistant worksurface
- Single-lock secures all drawers
- Aluminum frame doubles as rail system for adding accessories
- Lightweight design and durable 3" dual-wheeled casters for easy and quiet movement over any surface
- Handles on each side of cart allow you to move cart from any angle
- 1-year limited warranty

Available with Key Lock

Product Specs & Details

Available Models

19689 Key Lock
19689E E-Lock

Materials

Cart Panels: Aluminum Composite Material (ACM)

Cart Frame: aluminum

Worksurface: 0.5" marine grade HDPE

Base: 0.75" marine grade HDPE

Exterior Dimensions

Item #	Width	Depth	Height	Weight
19689	23.5"	17.75"	25"	52lb
19689E	23.5"	17.75"	25"	52lb
Shipping	30"	30"	50"	74lb

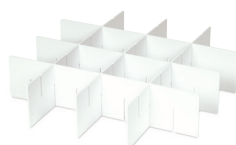
Interior Dimensions

	Width	Depth	Height	Weight Capacity (ea)
3" Drawer	11.5"	15.5"	2.75"	6lb
6" Drawer	11.5"	15.5"	5.75"	10lb
9" Drawer	11.5"	15.5"	8.75"	15lb

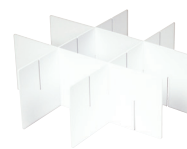
Accessories



3"H Drawer Divider Set
21641



6"H Drawer Divider Set
21642



9"H Drawer Divider Set
21643



Closed Side Bin
1000404



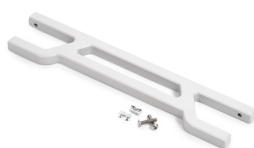
Open Side Bin
1000403



Oval Side Bin
1000405



Folding Workspace
110547



Cord Wrap
106920



Multi-Use Hook
106921